

KINGSPAN NEWS



THE NEWSLETTER OF KINGSPAN ACCESS FLOORS ISSUE 7 MAY 2012

NO REPORTABLE ACCIDENTS ON CONSTRUCTION SITES FOR KINGSPAN DURING 2011

KINGSPAN ACCESS FLOORS HAS RECEIVED A FURTHER BOOST FOR ITS COMMITMENT TO HEALTH & SAFETY WITH THE NEWS THAT 2011 WAS YET ANOTHER YEAR WITHOUT ANY ACCIDENTS ON CONSTRUCTION SITES AMONGST ITS STAFF AND SUB CONTRACTORS.

During 2011 we worked on about 160 sites from periods ranging from two weeks to a full year. We generally averaged eight people per site but for the largest contracts we had more than 20 at peak times.

Tony Morgan, our Construction Health & Safety Manager, said: "I am delighted that we have been able to achieve such an outstanding safety record."

"Bringing the Health & Safety audits in-house has brought huge benefits because we can more closely interact with our contract and site managers, site supervisors and personnel directly at site level to communicate and implement our Health & Safety activities," he added.

Another key feature of our Health & Safety success is our Site Operations Plan. We make regular visits to sites to ensure that all aspects of the plan are being followed.

The plan records the Kingspan method statements, risk assessments and COSHH information for every specific project. The 17-section plan also



contains registers for installers to confirm that they are wearing PPE and that all appliances have been tested. It is compiled post order and pre start and approved by all concerned.

Kingspan has a dedicated team of Health & Safety personnel, including Tony Morgan and our Factory Health & Safety Manager Iain Gillyon.

Our Directors and Managers are qualified to Construction Site Managers Safety Certificate standard and recently attended an IOSH Directing Safely refresher course. Our sub contract supervisors have Construction Site Supervisor's Safety Certificate accreditation.



TOP: Tony Morgan makes regular Health & Safety audits on sites. ABOVE: Our Site Operations Plan is another key factor in our success.

INTERNATIONAL NEWS

KINGSPAN IN AWARD-WINNING BUILDING

A BUILDING WHICH FEATURES 19,500M2 OF KINGSPAN ACCESS FLOOR PANELS HAS BEEN VOTED "THE BEST OFFICE & BUSINESS DEVELOPMENT" AT THE 2012 MIPIM AWARDS IN CANNES.

Main Point Karlin in Prague beat more than 100 projects from 47 countries to win the prestigious award. Kingspan's contract to supply RG2 panels for Main Point was placed by Prointerier, who fitted out the 10-storey building. Although



the finished floor height was very low and the concrete slabs were uneven, the 23mm thickness of the RG2 panels (compared to a standard conventional chipboard panel thickness of 38mm) helped to provide usable height for cables and other lines in the cavity.

Developed by PSJ Invest, Main Point Karlin is striving to achieve Platinum, the highest level of certification in the LEED system. Features of the building include facade pillars that work as sunshades, and cooling of the building using water from the River Vltava.

BELGIUM: 44,000M2 OF ORDERS



DURING RECENT MONTHS KINGSPAN HAS GAINED COMBINED ORDERS FROM BELGIUM FOR 44,000M2 OF RG3 AND RG2 FLOORING – ALL PLACED BY DYNABAT, KINGSPAN'S LONGEST-SERVING DEALER, WHICH HAS WORKED WITH US FOR OVER 20 YEARS.

The contracts include 19,000m2 for New Urban (pictured above), a new office building with a view over Square Frere Orban, at the centre of the European Quarter in Brussels, and 15,000m2 for offices at Arts Lux, next to the Royal Palace.

SPAIN: NEW HQ FOR FCC

A TOTAL OF 18,000M2 OF RG3 WILL BE INSTALLED IN NEW HEADQUARTERS BEING BUILT FOR FCC, ONE OF THE LARGEST MAIN CONTRACTORS IN SPAIN.

The order has been won by our Spanish joint venture company Kingspan Suelo Técnico.

KINGSPAN MAINTAINS ITS LEADING POSITION IN THE IRISH MARKET

DESPITE THE DIFFICULT ECONOMIC CLIMATE IN THE IRISH MARKET, KINGSPAN CONTINUES TO BE THE MARKET LEADING SUPPLIER OF RAISED ACCESS FLOORING SOLUTIONS, BOTH IN THE NORTH AND THE SOUTH.

Surety of supply, adherence to specification and total warranty on installed systems remain high on the list of requirements from our clients; and many of the new Data Hall projects are being entrusted to our supply.

In conjunction with our experienced installation partner base we have been involved in all the major projects requiring raised access flooring within this dynamic market. Recent projects have included:

- The Boat, a purpose-built office development in Belfast offering an unrivalled position near the city's Titanic Quarter. Drew Wylie Building Services and his team have installed the RG series of panels on fit outs for a number of high profile clients in this prestigious building.
- They have also recently completed the new Concourse Building in the Titanic Quarter's Science Park, installing over 3,000m2 of RMG 600 to full PSA specification.
- In Dublin, Cableplan Ltd has recently completed the final phase of works comprising some 10,000m2 of RG series panels on the new HQ building for Google in Barrow Street.
- Our other installation partner, also based in Dublin, Jan Janssen and Co, has completed successful installations of our Torlock and TL range of systems in high profile projects such as Trinity Bio-Science (6,000m2), Bord Na Mona and Apple, Cork.

RMG FLOORING FOR NEW CIVIC OFFICES IN ROCHDALE



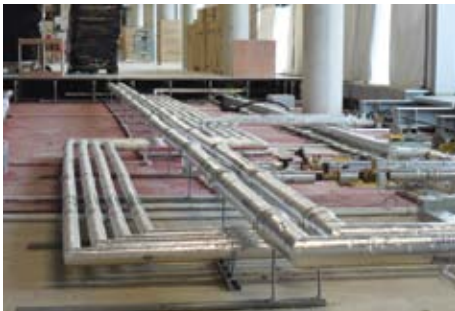
NEARLY 13,000M² OF KINGSPAN ACCESS FLOORING IS BEING INSTALLED IN NEW CIVIC OFFICES FOR ROCHDALE METROPOLITAN BOROUGH COUNCIL BEING BUILT BY SIR ROBERT MCALPINE.

Set to open towards the end of 2012, the new six-storey building will be home to 2,000 council staff who are currently based in 33 premises within the borough.

The civic offices will feature a new library and information centre, customer service centre, training and conference facilities.

The Kingspan RMG steel encapsulated flooring has a finished floor height of up to 400mm to contain an extensive range of M&E services required for the building.

These include a sealed air plenum system to provide air conditioning throughout, pipework from a biomass boiler to generate sustainable heat, and further pipework carrying rainwater



Some of the services running under the access flooring.

collected from the roof and recycled for toilet flushing. Kingspan began the flooring installation towards the end of March and the work is due to be completed in 20 weeks.

The new civic centre is part of a £100 million plus retail and leisure development that also includes demolishing the current municipal offices and an adjacent bus station to make way for the development.

The new building will meet high energy saving standards with additional features including solar thermal panels using the sun's rays to generate hot water and photovoltaic panels creating renewable electricity.



Kingspan is installing bridging sections to cross the sealed air plenum.

KINGSPAN NOW CARRYING OUT GREEN AUDITS ON SITE

KINGSPAN IS NOW ABLE TO CARRY OUT IN-HOUSE MONITORING OF OUR ENVIRONMENTAL IMPACT ON CONSTRUCTION SITES.

This follows our Health & Safety Manager Tony Morgan's success in recently gaining the NEBOSH National Certificate in Environmental Management.

Tony said: "Our environmental audits were previously done by an outside supplier, but now that we are accredited we are able to bring them in-house, making us directly accountable to our clients."

"We will also be able to merge the Health & Safety and environmental audits to give our clients a more rounded audit of our site activity," he added.

The audits monitor our waste generation and recycling on site, together with our overall impact on the environment. Tony will carry out the audits at least every month and twice a month on the larger sites.

REACCREDITATION

AFTER FIRST GAINING ACHILLES 'BUILDINGCONFIDENCE' ACCREDITATION IN 2007, KINGSPAN ACCESS FLOORS HAS NOW SUCCESSFULLY RETAINED ITS ACCREDITATION FOR THE FIFTH SUCCESSIVE YEAR.

To gain the accreditation, companies have to demonstrate a high level of competence in areas such as Health & Safety, quality assurance and control, environmental management, business continuity, subcontractor and supplier management, social and ethical controls, and plant and equipment management.

NEW APPOINTMENT HIGHLIGHTS INCREASED FOCUS ON R&D WORK

KINGSPAN HAS SIGNALLED AN INCREASED FOCUS ON RESEARCH AND DEVELOPMENT BY APPOINTING CARL BINNEY AS R&D MANAGER.

The appointment marks a return to Kingspan for Carl – he worked with us for 10 years in quality and technical roles before leaving to spend seven years in Nigeria as a Quality and Commissioning Co-ordinator with Shell.

Carl said: “Before I left Kingspan the company had a good test facility but during the period I have been away it has been developed into probably the best to be found in the UK.”

One of his first tasks at Kingspan is to oversee an upgrade to our rolling load facility, which will result in us becoming the first UK test house to be able to test to the American CISC standard.

Carl will also be placing particular emphasis on further increasing the type and volume of material that we recycle, to further reduce waste whilst at the same time also making our carbon footprint even lighter.



Our existing rolling load facility.



Carl Binney has been appointed R&D Manager at Kingspan Access Floors.

KINGSPAN IN THE COMMUNITY

KINGSPAN HAS REINFORCED OUR COMMITMENT TO THE COMMUNITY BY RECENTLY SUPPORTING THREE CHARITIES IN EAST YORKSHIRE.

DOVE HOUSE & THE RSPCA

Kingspan's annual raffle of prizes donated by suppliers raised £862 this year for the local Dove House Hospice and the Hull branch of the RSPCA.

LILAC COMMUNITY CAFÉ

We also helped a third East Yorkshire cause when we supported the official launch of LILAC (Lifestyle Initiatives Launched Against Cancer).

We donated a carpet for LILAC's community café and information centre (pictured below), and members of our Customer Services and Purchasing team helped to get the premises ready for the official opening by Hull MP Alan Johnson.



HOW TO CONTACT KINGSPAN

For more information about the articles in this newsletter or about Kingspan's access flooring ranges and services, you can:

- Telephone: 01482 781701
- Email: info@kingspanaccessfloors.co.uk
- Visit www.kingspanaccessfloors.co.uk

Kingspan Access Floors Ltd, Burma Drive,
Marfleet, Hull HU9 5SG

